

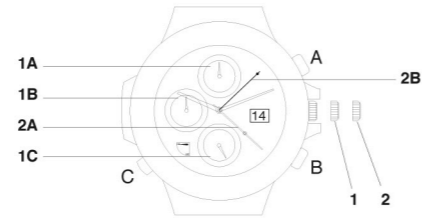
# STORM

LONDON

## CHRONOGRAPH MODELS

### DISPLAY OPTION 1

Chronograph type 1 (second/minute/hour) date and alarm



#### CROWN POSITION

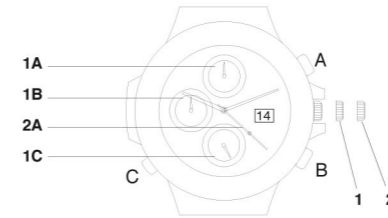
POSITION 1 - CHANGE DATE  
 POSITION 2 - CHANGE TIME, reset small dials and stops main time second hand.  
 Please note that the dial positions will vary from model to model.

### FUNCTIONS

- Button A**  
START and STOP chronograph stop watch
- Button B**  
Reset chronograph stop watch.
- Button C**  
Pull ON push OFF alarm if featured on design.
- Dial 1A**  
Indicates the MINUTES for stop watch.
- Dial 1B**  
Indicates the HOURS for the stop watch.
- Dial 1C**  
Indicates the seconds for the main time Display.
- Hand 2A**  
Indicates the SECONDS for the stop watch
- Hand 2B**  
Alarm indicator hand.

### DISPLAY OPTION 2

Chronograph type 2 (second/minute/hour) date/torch



#### CROWN POSITION

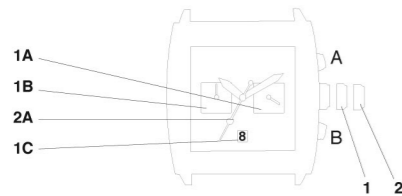
POSITION 1 - CHANGE DATE.  
 POSITION 2 - CHANGE TIME, reset small dials and stops main time second hand.  
 Please note that the dial positions will vary from model to model.

### FUNCTIONS

- Button A**  
START and STOP chronograph stop watch
- Button B**  
Reset chronograph stop watch.
- Button C**  
Turn ON TORCH/LIGHT if featured in design. Automatic turn OFF.
- Dial 1A**  
Dial 1A indicates the MINUTES for stop watch.
- Dial 1B**  
Dial 1B indicates the HOURS for the stop watch.
- Dial 1C**  
Dial 1C indicates the seconds for the main time Display.
- Hand 2A**  
Hand 2A indicates the SECONDS for the stop watch

### DISPLAY OPTION 3

Chronograph type 3 (minute/24hr) date



#### CROWN POSITION

POSITION 1 - CHANGE DATE.  
 POSITION 2 - CHANGE TIME and reset small dials.  
 There is no second hand for the main time.

Please note that the dial positions will vary from model to model.

### FUNCTIONS

- Button A**  
START and STOP chronograph stop watch
- Button B**  
Reset chronograph stop watch.
- Dial 1A**  
Dial 1A indicates the MINUTES for stop watch.
- Dial 1B**  
Dial 1B indicates the HOURS for the stop watch.
- Dial 1C**  
Dial 1C indicates the Date.
- Hand 2A**  
Hand 2A indicates the SECONDS for the stop watch

### SETTING THE DATE

To alter the date, pull crown out to position 1 and turn anticlockwise.

### SETTING THE TIME

To alter the time, pull crown out to position 2 and turn clockwise or anticlockwise to show the correct time.  
 NB the date will change at 12 am so turn hands through 24Hr cycle to confirm if time shows am or pm.

### SETTING THE ALARM

To set the alarm, pull crown out to position 1 and turn clockwise to move arm to required time on the 24Hr dial. ie 12pm will be shown at the 6 o'clock marker.  
 Push crown back in to normal position.  
 Pull out crown C to turn alarm ON.

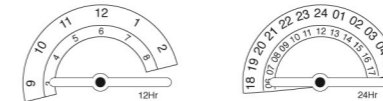
### STOPWATCH HAND ALIGNMENT

If the hands do not align at the 0 position when reset button pressed pull out the winder to position 2 and press Button A to advance 1 sec per press or press and hold to quick advance.  
 Push crown in to normal position to restart time and use stopwatch.

### ADDITIONAL FEATURE / DIAL

#### Half dial dual time

This dial has 2 semi circle digit displays and one hand as illustrated. The longer side of the hand indicates the time on the outer semi circle and the shorter side indicates the time shown on the inner semi circle. This dial can also be used to show the date.



#### Dual time

Dual time movement with off centre second hand.



MY07